



# SENA<sup>®</sup>

SHIP MANAGEMENT S.A

# M/V AL HUSSEIN

## 8318116

**VESSEL  
PAMPHLET**



---

25 Reda Street, ADAM bldg. 4th Floor, Ismailia-Egypt.  
Tel: +201033050011 | +20643135910  
Info@senashipping.com  
www.senashipping.com



<b>VESSEL NAME</b>	<b>: ALHUSSEIN</b>
<b>VESSEL TYPE</b>	<b>: RO-RO CARGO SHIP</b>
<b>FLAG</b>	<b>: ST. KITTS &amp; NEVEIS</b>
<b>REGISTRION NO</b>	<b>: SKN 1003913</b>
<b>PORT OF REGISTRY</b>	<b>: BASSETERRE</b>
<b>CALL SIGN</b>	<b>: V4QK4</b>
<b>MMSI</b>	<b>: 341414000</b>
<b>IMO NUMBER</b>	<b>: 8318116</b>
<b>YEAR BUILT</b>	<b>: 1985</b>
<b>CLASS SOCIETY</b>	<b>: CAPITAL REGISTER OF SHIPPING</b>
<b>CLASS NOTATION</b>	<b>: CS 1 RO-RO CARGO SHIP, CM</b>
<b>CLASS ID</b>	<b>: CR-00222</b>
<b>BUILDER</b>	<b>: SCHLICHTING -WERFT GMBH - LUEBECK</b>
<b>OWNER</b>	<b>: ALBANYASIA OVERSEAS INC.</b>
<b>MANAGER</b>	<b>: SENA SHIP MANAGEMENT S.A.</b>
<b>P &amp; I CLUB</b>	<b>: AMERICAN CLUB</b>
<b>H &amp; M CLUB</b>	<b>: AL-BAHRIAH INSURANCE &amp; REINSURANCE S.A.L</b>

## SHIP PARTICULARS:

LENGTH OVERALL (M).	: 117.20
LBP (M).	: 101.00
DEPTH (M).	: 12.00
BREADTH OVERALL (M).	: 17.50
DRAUGHT (SCANTLING) (M)	: 5.22
LENGTH OF RAMP (M)	: 15.00
BREADTH OF RAMP (M)	: 13.50
DEAD WEIGHT (TONS)	: 3,133
GROSS TONNAGE (TONS)	: 6,650
NET TONNAGE (TONS)	: 1,995
SUEZ CANAL GROSS TONNAGE (TONS)	: 7,135.66
SUEZ CANAL NET TONNAGE (TONS)	: 5,912.51
LIGHT WEIGHT (TONS)	: 2,453
DISPLACEMENT (TONS)	: 5,586

## PROPULSION PARTICULARS:

MAIN ENGINE	: (TWO) MAK 9 M453 3670 KW @600 RPM
AUX. ENGINE	: (THREE) MAN B&W 6L 20/27 486 KW @ 440 V
EMG DIESEL GENERATOR	: DEUTZ F5L 413 FR 78 KW @1800 RPM 125/130
EXHAUST GAS BOILER	: TWO X 750 KG/HR AALBORG AV-6

## CARGO HOLDS CAPACITY:

TOTAL CONTAINERS CAPACITY	: 236 (FULL) + 21 (EMPTY) CONTAINERS
CARGO HOLD CAPACITY (BALES)	: 11,100.0
CARGO HOLD CAPACITY (GRAIN)	: 12,250.0
REFER CONTAINERS	: 38

## CARS & TRAILERS CAPACITY:

	CARS	TRAILERS 20 FT	TRAILERS 40 FT
LOWER HOLD	46	--	--
MAIN DK.	158	66	33
WEATHER DK.	155	65	30 +(5X20FT)
<b>TOTAL</b>	<b>359</b>	<b>121</b>	<b>63</b>

CARGO HOLDS DIMENSIONS	LENGTH (MT)	BREADTH (MT)	HEIGHT (MT)
LOWER GARAGE	44.5	(3.6 & 13.5)	2.8
MAIN GARAGE	94	( 6.2 & 17.5 )	6.0
WEATHER DECK	88	15	4.5

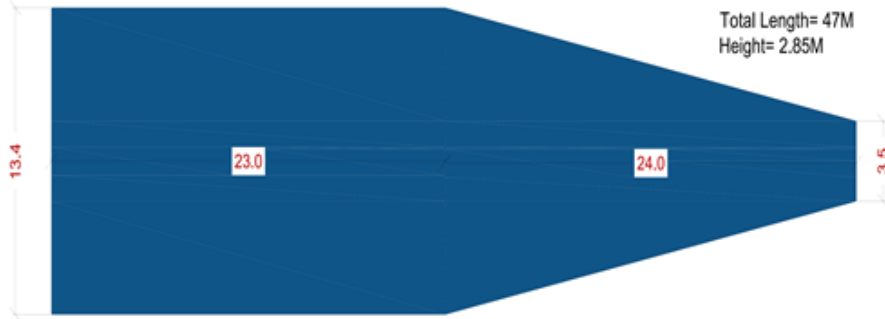
## LANE METER

LOWER HOLD	: 145
MAIN DECK	: 440
WEATHER DK	: 430
<b>TOTAL</b>	<b>: 1,015</b>

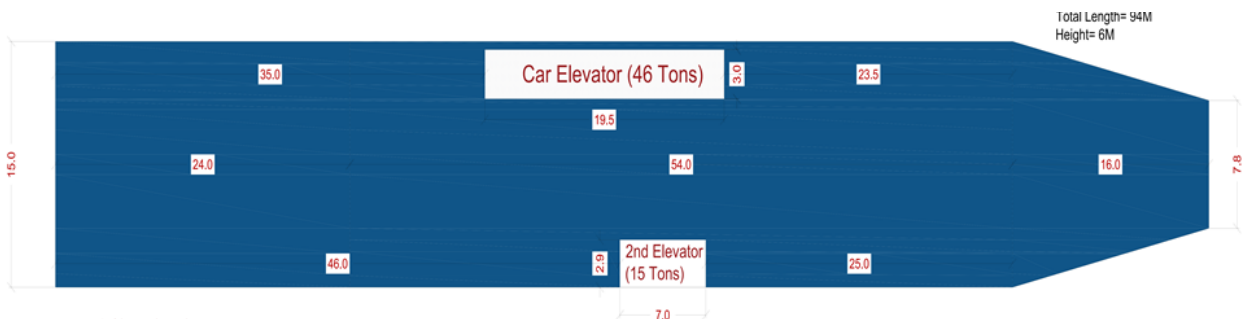
## TANK CAPACITIES

PROVISION REFRIGERATOR (M3)	: 30.00
DIESEL TANK CAPACITY (M3)	: 155.00
H.F. OIL TANK CAPACITY (M3)	: 545.90
LUB. OIL TANK CAPACITY (M3)	: 38.70
FRESH WATER TANK CAPACITY (M3)	: 352.00
DIESEL CONSUMPTION AT PORT (TONS)	: 2.0 (ACT)
DIESEL CONSUMPTION AT SEA (TONS)	: 2.0 (ACT)

**LOWER DECK :**  $13.4 \text{ M} \times 23 \text{ M} = 308.2 \text{ M}^2$   
 $(13.4 \text{ M} + 3.5 \text{ M}) / 2 \times 24 \text{ M} = 202.8 \text{ M}^2$   
**TOTAL = 511 M<sup>2</sup>**



**MAIN GARAGE:**  $15 \text{ M} \times 35 \text{ M} = 525 \text{ M}^2$   
 $11 \text{ M} \times 11.5 \text{ M} = 126.5 \text{ M}^2$   
 $8.6 \text{ M} \times 7 \text{ M} = 60.2 \text{ M}^2$   
 $1.5 \text{ M} \times 11.5 \text{ M} = 17.25 \text{ M}^2$   
 $15 \text{ M} \times 23.5 \text{ M} = 352.5 \text{ M}^2$   
 $(7.8 \text{ M} + 15 \text{ M}) / 2 \times 16 \text{ M} = 182.6 \text{ M}^2$   
**TOTAL = 1,263.85 M<sup>2</sup>**



**WEATHER DECK:**  $15 \text{ M} \times 29 \text{ M} = 435 \text{ M}^2$   
 $15 \text{ M} \times 38.5 \text{ M} = 577.5 \text{ M}^2$   
 $11.5 \text{ M} \times 19.5 \text{ M} = 224.25 \text{ M}^2$   
**TOTAL = 1,236.75 M<sup>2</sup>**

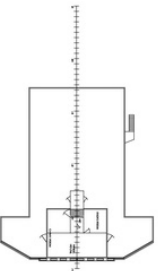
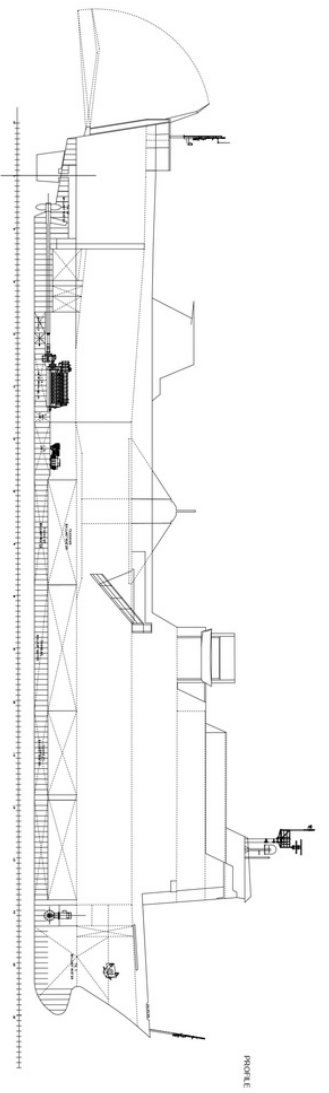




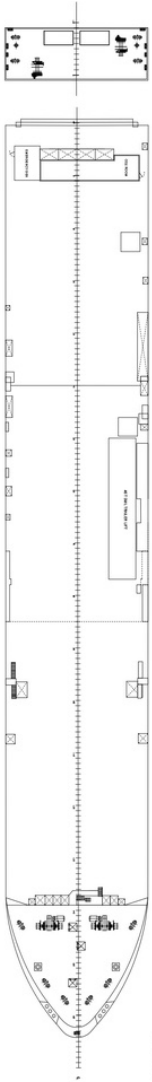
**M/V AL HUSSEIN**

**8318116**

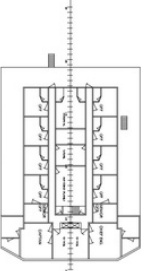
# **GENERAL ARRANGEMENT**



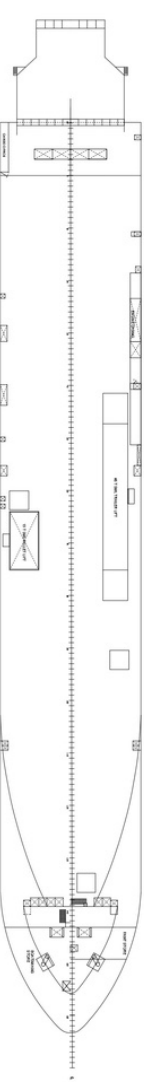
3RD SUPERSTRUCTURE DECK



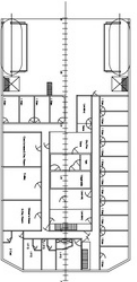
MAIN DECK



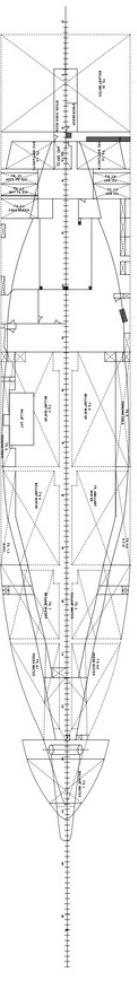
2ND SUPERSTRUCTURE DECK



TWEEN DECK



1ST SUPERSTRUCTURE DECK



STOWAGE

		2024 RELEASED UNDER THE MARITIME ACT 2024 RELEASED UNDER THE MARITIME ACT 2024 RELEASED UNDER THE MARITIME ACT	
COMP NO	SECTION	DATE	REVISION
SHIP TYPE M/V AL HUSSEIN GENERAL ARRANGEMENT		SHEET POSITION NO.	